



FEATURE

- Compact DIL-14 Package
- Wide frequency range
- Custom Options available
- RoHS Compliant Standard

Table 1

Codes	Stability Codes	E	F	G	M	K
	Frequency Stability	±15 PPM	±20 PPM	±25 PPM	±50 PPM	±100 PPM
A	0 to +50° C					
B	0 to +60° C					
F	0 to +70° C					
D	-10 to +60° C					
E	-10 to +70° C					
C	-20 to +70° C					
G	-30 to +80° C					
H	-30 to +85° C					
I	-40 to +85° C					

■ Denotes Available □ Denotes not Available

Table 2

Supply Voltage	+3.3 V	+5 V
Code	3	5

MECHANICAL SPECIFICATIONS

Outline

Top View

Front View

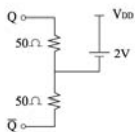
Bottom View

All dimensions are in mm.
 Sharp edge indicates Pin No.1

Pin Configuration

- 1: Q (Output)
- 7: V_{EE} (Ground)
- 8: Q (Output)
- 14: V_{DD}

TEST CIRCUIT



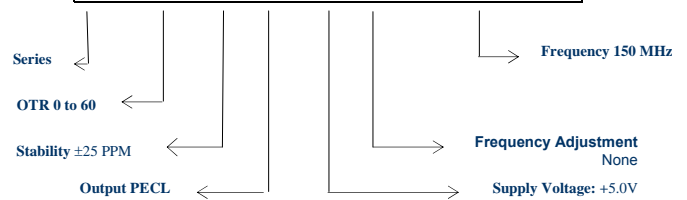
Parameters	900	925	Option Codes
Series: XO-900 (+5.0 V) XO-925 (+3.3 V)	■	■	
Frequency Range: 40 MHz – 210 MHz Others	■ □	■ □	Specify
Accuracy @ 25°C: ± 10 ppm.	■	■	
Output Drive: 100K PECL Compatible	■	■	
Output Waveform: Square Wave	■	■	
Output Level: Logic '0' = +3.38V max '1' = +3.97V min Logic '0' = +1.68V max '1' = +2.27V min	■	■	
Rise / Fall time: (20% to 80% VDD) 5 ns max	■	■	
Wave form Symmetry: 40:60% max	■	■	
Frequency stability: (Table 1)	□	□	Specify
Temperature range: (Table 1)	□	□	Specify
Supply voltage (VDD): (Table 2) +5.0V DC (±5%) +3.3V DC (±5%)	■ ■	■ ■	
Supply Current: 130 mA max 100 mA max	■	■	
Start up time: 10 ms max	■	■	
Ageing: ± 5 ppm max per year.	■	■	
Storage temperature range: -55 to +125° C	■	■	

■ Standard, □ Optional – please specify required code(s) when ordering.

Ordering Information

Example

XO **900 B G P 5 N 150M000000**



Specifications subject to change without notice
 Revision No. 12b of May 2008