



VOLTAGE CONTROLLED CRYSTAL OSCILLATOR-ECL

VCXO 1800 & VCXO1801

FEATURE

- Compact DIL-14 Package
- Wide frequency range from 40 MHz upto 210 MHz
- Custom options available
- RoHS Compliant Standard

Table 1

Codes	Stability Codes					
	Frequency stability range	E	F	G	M	K
A	0 to +50° C	±15 PPM	±20 PPM	±25 PPM	±50 PPM	±100 PPM
B	0 to +60° C					
F	0 to +70° C					
D	-10 to +60° C					
E	-10 to +70° C					
C	-20 to +70° C					
G	-30 to +80° C					
H	-30 to +85° C					
I	-40 to +85° C					

Denotes Available Denotes not Available

MECHANICAL SPECIFICATIONS

	Outline 1800 series	Outline 1801 series
Top View		
Front View		
Bottom View		

Note: Sharp edge indicates Pin 1.

▲ All dimensions are in mm.

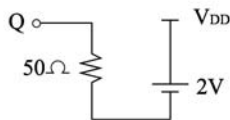
Pin Configuration of VCXO 1800

- 1: Control Voltage
- 7: VEE
- 8: Output (Q)
- 14: VDD (0 Volts)

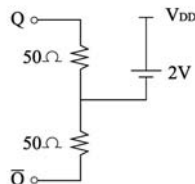
Pin Configuration of VCXO 1801

- 1: Control Voltage
- 7: VEE
- 8: Output (Q)
- 9: Output (Q)
- 14: VDD (0 Volts)

TEST CIRCUIT



TEST CIRCUIT

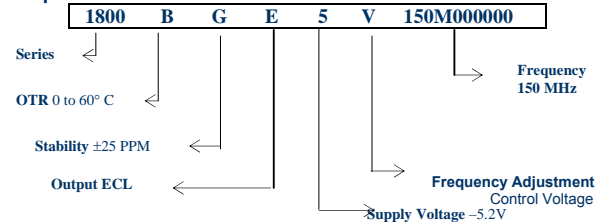


Parameters	1800/1801	Option Codes
Series:	VCXO-1800 & VCXO-1801 (-5.2 V)	■
Frequency Range:	40 MHz – 210 MHz Others	■ □ Specify
Accuracy @ 25°C:	± 10 ppm.	■
Output Drive:	100K ECL Compatible	■
Output Waveform:	Square Wave	■
Output Levels:	Logic '0' = -1.6 V max, '1' = -1.02 V min	■
Rise / fall time:	(20% to 80% VEE) 5 ns max	■
Waveform Symmetry:	40:60% max	■
Frequency Stability:	(Table 1)	□ Specify
Temperature Range:	(Table 1)	□ Specify
Supply voltage (VEE):	-5.2 V DC (±5%)	■
Supply Current:	100 mA max	■
Control Voltage Range:	-5.0 Volts to 0 Volts	■
Pulling Range:	± 100 ppm min	■
Linearity:	20% max	■
Start up time:	10ms max	■
Ageing:	± 5 ppm max per year	■
Storage temperature range:	-55 to +125° C	■

■ Standard, □ Optional – please specify required code(s) when ordering.

Ordering Information

Example



Specifications subject to change without notice
Revision No. 12b of May 2008

ANDHRA ELECTRONICS LIMITED

34 & 35, IDA, Kakinada, AP – 533 005,
INDIA.
URL: www.andhraelec.com

Phone: +91-884-2342203
Fax: +91-884-2341145
E-mail: info@andhraelec.com